

System Platon – By **Certainteed** - Foundation Protection

Materials needed

Platon Membrane – One roll for every 62 ft of foundation.

Finished Grade to footing = Roll Height

Platon Moulding- 4 strips per job Plus one strip per window well.

Caulking- Minimum 2 tubes per roll. Asphalt or Butyl Rubber based Roof and gutter caulk. . Do not use Polyurethane or silicone. For ICF use a foam compatible caulk.

Fasteners- 1 ¼” concrete nails or pins for block or poured foundations.

1 ½” drywall or deck screws for ICF and wood foundations.

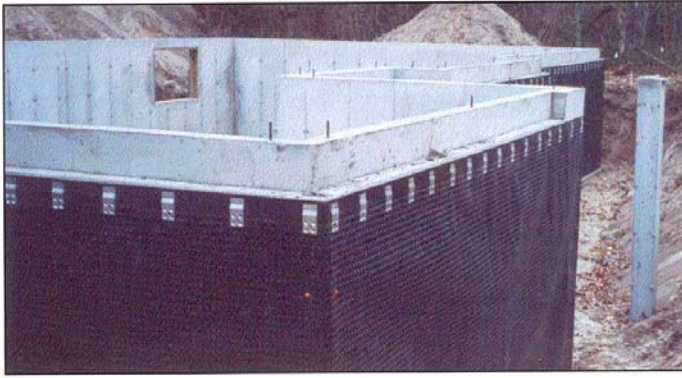
System Platon Installation



1. Break off form ties, clear stone and debris from footing, caulk rod holes, determine finished grade and mark with a chalk line.
2. Tip – Install sloped sections first.
3. Run a bead of caulk 1” below the chalk line



1. **Begin installation-** unroll Platon working left to right, dimples toward the wall. Smooth tab at the top follows the chalk line.
2. Fasten with speed clips at the top of the platon one every 12”. Green concrete can be hand nailed. Use screws for ICFs and wood.



1. Platon membrane must extend from finished grade (chalk line) and stand on the top of the footing. Excess membrane (if any) at the footer may be folded out over footer and cut even with the footer edge.
2. Overlap seams at the end of the roll or at changes in grade by 20". Nail bottom of membrane every 6 feet 12" above the footing using system plugs to prevent wind lift.

1. **Windows** – can be applied 2 ways. The top window shows platon cut even with the



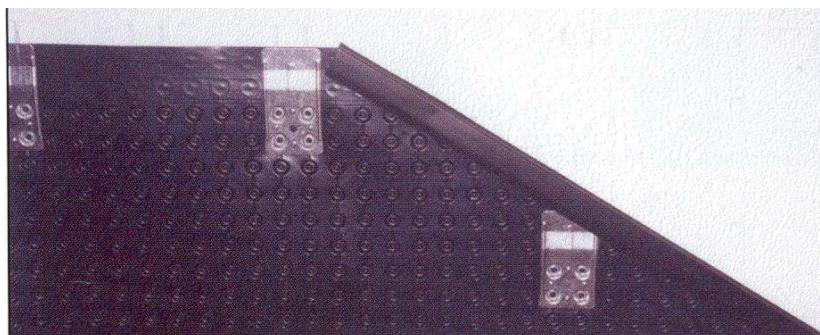
sides and 3" lower than the bottom opening. Continue platon plug nailing below the window opening every 6".

2. Caulk the open horizontal cut with caulk and Platon Moulding extending the moulding beyond the vertical cuts.

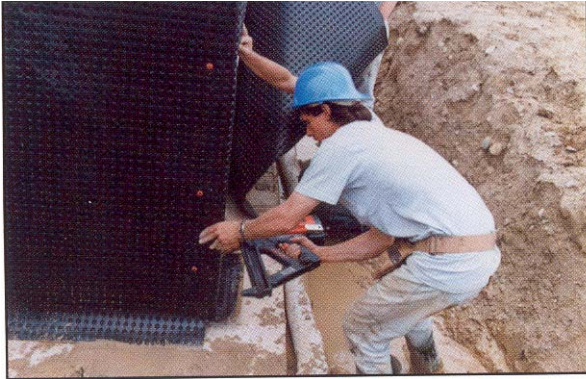


3. OR as shown in the window below use the speedclips to seal the open lower edge.

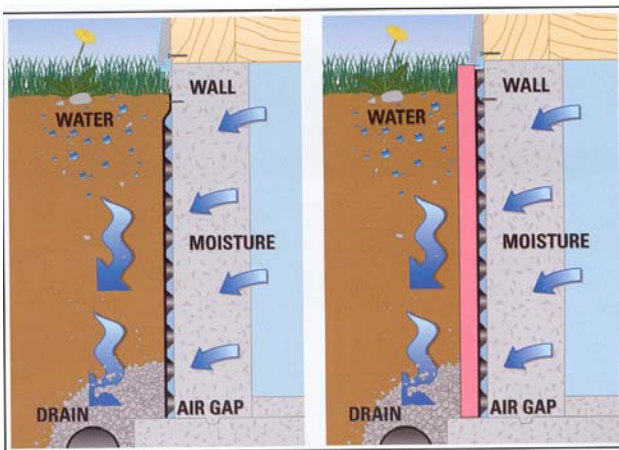
4. The window well is then placed over the membrane. Exposed platon at the sides can then be trimmed and caulked if desired.



1. **Grade Change** – Cut membrane to proposed finished grade. Fasten with speedclips. Seal cut edge with caulk and Platon Moulding.



- 1 **Corners** –Cut the bottom of the membrane if it extends over the footer. Fasten With Platon Plugs near the top, middle and bottom of each side of the corner.



1. **Backfilling** – Place 12” of stone over the drain tile and up the wall before backfilling. A geotextile is laid over the stone before backfilling is a good practice. Do not let large machinery, rocks or frozen clumps to impact the membrane.
2. Backfill carefully using 2 or 3 lifts of compacted backfill vs. on uncompacted one to prevent excess settling.
3. **Insulation**- To insulate the soil side of the foundation, EPS foam is installed after the Platon is in place. The air gap does not affect the R value of the insulation.